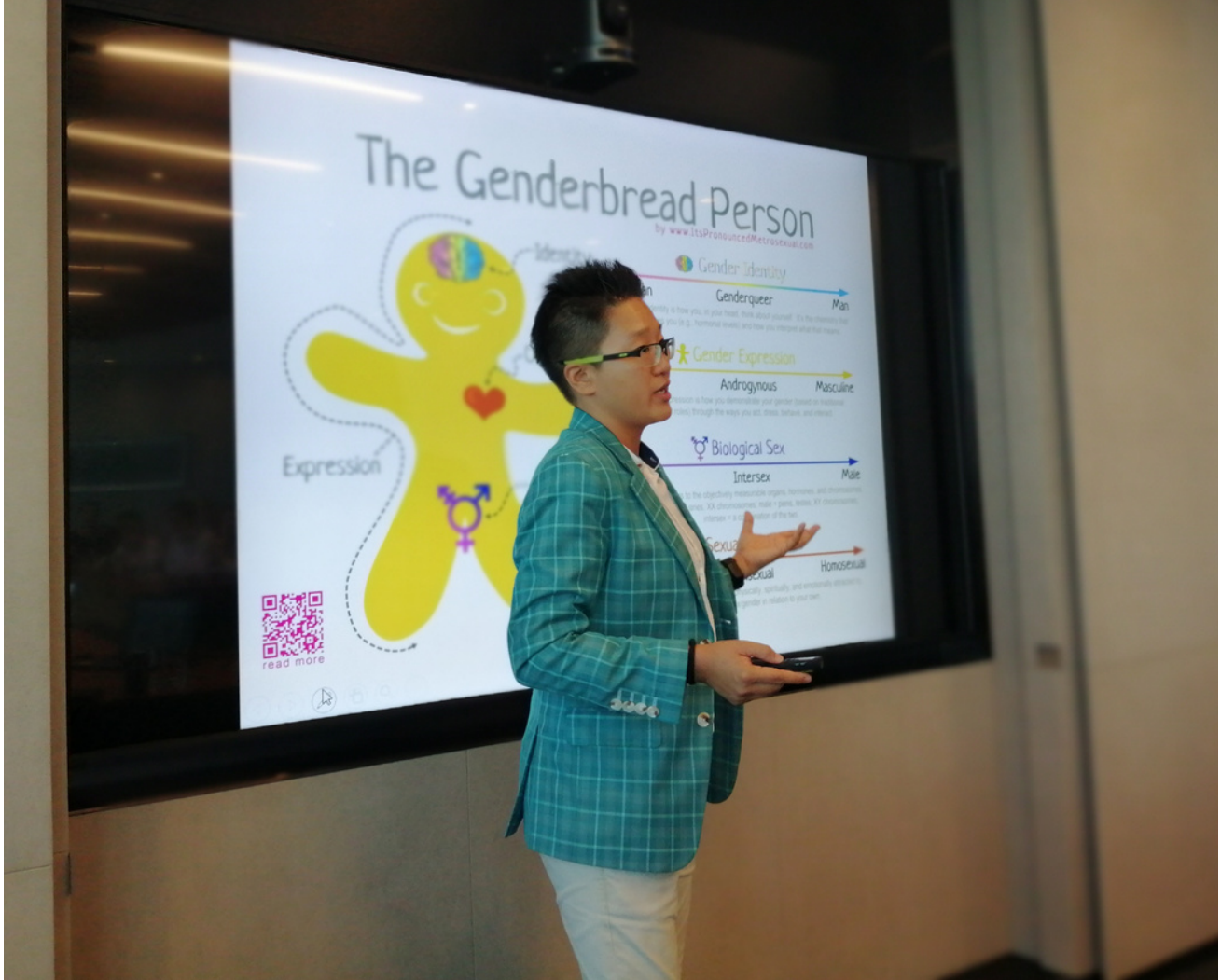




Educational Excursions



ENCOMPASS HK



ABOUT ENCOMPASS HK

Encompass HK is a social enterprise that advocates for the Sustainable Development Goals (SDGs) through training and consultancy services to educate and support organisations to be more diversified and inclusive. The enterprise serves the community by contributing to social causes and Non-Governmental Organisations, as well as working with them through collaborative models. Encompass HK's clients include SWIRE Properties, Jardines, Manulife, ANZ Bank, Schrodgers, Freshfields, KPMG, the Capital Group, Verizon Media and others.

Our programs have been featured in ViuTV, HKIBC, HKEJ, RTHK and SCMP.



ABOUT OUR APPROACH

Encompass HK believes that best learning outcomes result when participants are engaged holistically with the program content. Our learning and development programs incorporate experiential learning techniques with opportunities for participants to reflect on and apply learnings to face real-life challenges. Our workshops are all customized according to each client's needs. Some of our signature programs include:



1-day Sustainability training for SWIRE Properties, using the University of Hong Kong campus as a SDG model.



Gender equality training through beer and chocolate tasting for Manulife and Schrodgers to stimulate discussions on gender stereotypes and on how to be a better male ally.



LGBT+ inclusive language training with case studies and role-play for Freshfields.

OUR TOURS

ENCOMPASS HK

Hong Kong is known for its shopping malls and high rises. While these are of course impressive, there is much more to Hong Kong than shopping and buildings. Nearly half of Hong Kong is designated as country park, and a lot of land is still undeveloped. It offers many opportunities for a great day out - a day away from the noise, the traffic and the crowds.

Hong Kong is small and compact, allowing many different things to be seen within short distances. The same accounts for its countryside, which is remarkably rich in diversity - only if you knew where to find those hidden gems. We want to share this beautiful back yard with you and show you the other side of Hong Kong.

Encompass HK excursions are fun, educational and engaging. Each of our tours has different elements in nature, geology, ecology, sustainability, culture and heritage and are led by guides with expert experience in the field.

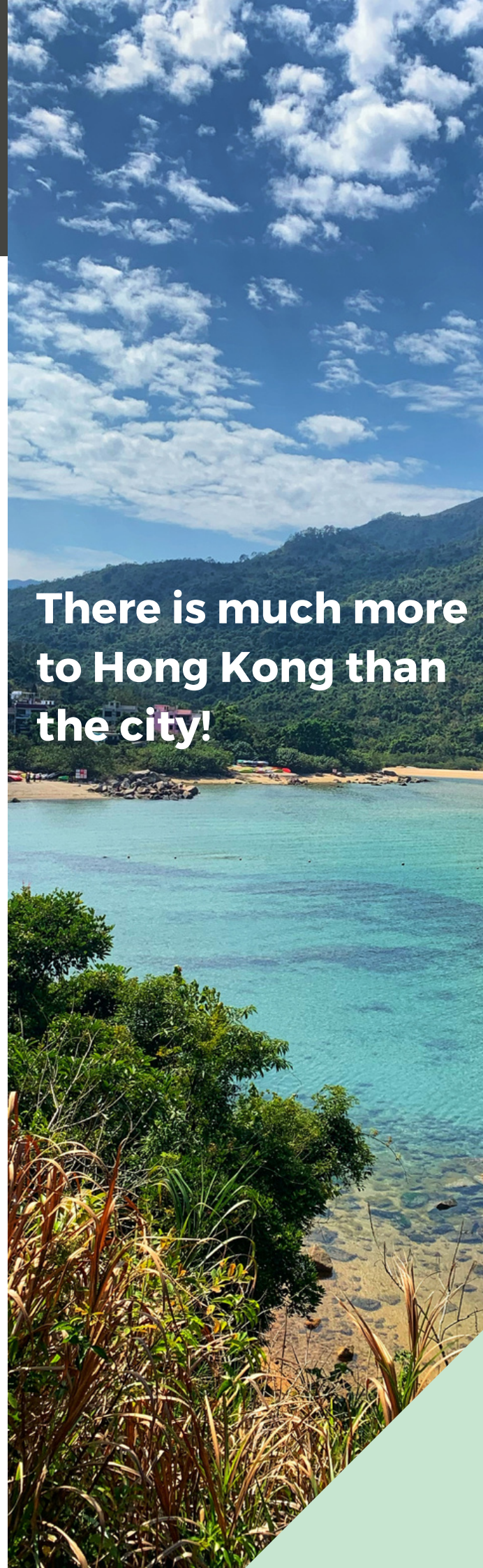
Our tours include destinations in

DAY TOUR

- Green Egg Island
- Hoi Ha Wan Marine Park
- Long Valley
- Lung Mei
- Lai Chi Wo
- Mui Wo
- Tung Ping Chau Marine Park
- Yim Tin Tsai

NIGHT TOUR

- Lung Fu Shan
- Sai Kung
- Tai Po Kau
- Tai Tam Reservoir



**There is much more
to Hong Kong than
the city!**

OUR TOURS IN THE MEDIA



South China
Morning Post

Post Magazine / Short Reads

Explore Hong Kong's rich Hakka heritage at traditional walled village

Encompass HK's tour of Lai Chi Wo, near Sha Tau Kok, offers a taste of a disappearing culture

Last year, the government approved a development plan to restore 14 houses in the centuries-old settlement



Kylie Knott

[FOLLOW](#)

Published: 2:30pm, 20 Mar, 2020

Why you can trust S

382



Post



the New Territories. Photo: SCMP / Roy Issa



A bamboo pit viper. Photo: Adam Francis / SnakeID TV



⇒ Night safari

Who says you have to go to Singapore to attend a night safari? Take advantage of Hong Kong's incredible (and wholly underrated) biodiversity by attending a night safari right here in our backyard. Snake expert William Sargent often hosts night-time snake safaris around Tai Mo Shan and Kadoorie Farm, while Encompass HK hosts regular "mystery tours" and biodiversity excursions. Of course, nothing is guaranteed—that's why it's a mystery!—but you can often expect to see frogs, butterflies, and interesting insects. Summer is the

localiiz
MY LIFE IN HONG KONG

GREEN EGG ISLAND KAYAKING

Located off the coast of Clearwater Bay, Green Egg Island, originally called Lan Pai, is a paradise for people wanting a break from the hustle and bustle of the city.

The island gets a unique name from its resemblance to a green poached egg from above. With a small grassy hill and pebbly beach surrounding it, the island has become increasingly popular over the past year, attracting a large number of water sports enthusiasts. Many visitors have compared this island to the Maldives.

With no pier or other facilities, the island is relatively small but it has clear blue water and unique wealth of marine species which is perfect for snorkelling. Enjoy the beautiful views of various geological features in Sai Kung water, and learn different ecological knowledge along the way.

Suggested Itinerary (Total 4km):

- 9:30am - Assemble at Sheung Sze Wan and begin preparation
- 10:00am - Briefing
- 10:20am - Kayak to Green Island
- 12:00 - Lunch
- 13:00 - Explore/Snorkelling/Photo Time
- 14:30 - Rest, pacing and prepare to return
- 15:00 - Kayak back to Sheung Sze Wan
- 16:00 - Dismiss

Full Day Trip with kayaking.



HOI HA MARINE PARK

With an estimated 45,000 visitors according to the AFCD in 2015, Hoi Ha Wan (海下灣) is Hong Kong's most accessible Marine Park and is a popular destination for day trippers.

Watch out for monkeys in the trees, cows on the road, and a stunning view over Long Harbour as the road drops down from Pak Tam Au. With a wealth of corals, including 64 of the 84 species of stony corals found in Hong Kong, Hoi Ha Wan has been a Site of Special Scientific Interest since 1986 and was gazetted as a Marine Park in 1996. We will explore the diverse marine life in the mangrove and sandy shore habitats at HHW.

Highlights:

- Introduction to Hoi Ha Wan (by Friends of Hoi Ha)
- Guided walk along Hoi Ha Nature Trail and Marine Park area, including visits to Hoi Ha's Antiquities Monument, Hoi Ha ecologically sensitive stream
- Introduction to marine fauna
- Marine naturalist ID with demonstration of the iNaturalist app
- Plogging and beach clean up

Full Day Trip with kayaking and snorkeling options.



BIRDWATCHING IN LONG VALLEY

Long Valley (Chinese: 壟原) in Sheung Shui is the largest remaining agricultural area in Hong Kong. It is widely regarded as the prime biodiversity hotspot for lowland wildlife. In particular, it is recognized as an Important Bird Area by Birdlife International, one of the only two such sites locally. Environmental NGOs have managed the area for almost 20 years and as a result the habitats and species have continued to improve and diversify. In the trip we will explore the mosaic of wet and dry farmlands and village area for all kinds of resident and migratory birds. Beautiful kingfishers, elegant sandpipers and tiny buntings all await!



Half day trip with bird-watching equipment.



LUNG MEI KAYAKING

Located in Tai Po, adjacent to the popular weekend cycling and outdoor leisure destination Tai Mei Tuk, Lung Mei Beach is a 200-metre artificial stretch in the New Territories, created to extend the public's access to swimming facilities in the district.

Lung Mei support over 300 marine species including a newly-discovered endemic tree-climbing micro-crab, the vulnerable spotted seahorse and five species of starfish.

Suggested Itinerary:

- Kayaking skills input and water safety knowledge
- Paddle and eco tour to mangroves place
- Lunch on Sam Mun Tsai fishing farm
- Paddle and eco tour to Ma Shi Chau Geopark
- Paddle back and tour wrap up

Full day trip with kayaking



LAI CHI WO



The 300-year-old village of Lai Chi Wo (荔枝窩) was once one of the most affluent hamlets in the northeastern New Territories. It is a traditional Hakka village established in the 1670s. Many of these villages have been conserved partly due to the remoteness of the site.

The village features a God of War temple and a mangrove habitat with ancient vegetation, including huge interlocking-branch trees, hollow trees and 'five-finger' camphor trees. This area was once known for its lychee trees and has a long history of farming. Most residents have left in the past decades, with only a few returning on weekends, or over festival times. The houses remain well preserved and the feng shui wood behind the village flourishes, home to camphor, autumn maple, incense tree and other specimens – it is said to be one of the oldest surviving feng shui woodlands in Hong Kong.

Lai Chi Wo is part of the Hong Kong UNESCO Global Geopark due to its special geological significance as well as natural and cultural richness. Its coastline has the largest population of Coastal Heritiera (*Heritiera littoralis* 銀葉樹) and White-flowered Derris (*Derris alborubra* 白花魚藤) in Hong Kong and was designated a Site of Special Scientific Interest (SSSI) in 1979. The Heritiera impresses with its buttress roots while it intertwines with the White-flower Derris, a plant creating wild wood slings throughout these woods.

Suggested Itinerary:

- 8:45 am Gather at Ma Liu Shui Ferry Pier
- 9:00 am Private boat to Lai Chi Wo, view of New Territory Northeast famous scenery and Wong Chuk Kok Tsui Bluff Head Formation
- 10:30 am Arrive Lai Chi Wo
- 10:45 am Visit Lai Chi Wo village
- 11:30 am Visit Mui Tze Lam and local mural art
- 1:00 pm Lunch
- 1:30 pm Hakka Dumpling class
- 2:30 pm Feng shui woodlands walk
- 3:30 pm Private boat back to Ma Liu Shui
- 5:00 pm Return to Ma Liu Shui

Full day trip with dumpling making class.



MUI WO

Mui Wo (梅窩) is a small rural town on the eastern coast of Lantau Island in Hong Kong. It is a hidden gem with lots of community actions to create a sustainable neighborhood and attainment of the Sustainable Development Goals (SDGs). There is a refugee-friendly cafe, an old boundary stone, a unique second-hand bookstop, local co-op stores and many other attractions.

We'll explore the Mui Wo neighborhood to find out what the community did to achieve recycling and composting needs, and understand the issue of public housing in Hong Kong. We will learn about the history of Mui Wo and how this old village is now transformed. After that, we'll visit a local farm to look at composting and organic farming methods. Participants will get to pick butterfly-pea flower to make their own floral tea. We'll enjoy an organic lunch made from local grown organic vegetables before the afternoon excursion.

We'll have a short excursion to the Silvermine Waterfalls after lunch. Although hardly a hidden gem or any sort of best-kept-secret, the site never seemed to be particularly packed, even at the weekends. The spot is probably one of Hong Kong's most easily accessible waterfalls - a gentle stroll, unlike many other scenic spots on high SAR hills. We'll visit the Olympic Trail along the way, and the bat cave, and check out the water buffaloes impacted by tourism and plastic pollution.

Full day trip with farm-to-table lunch.



TUNG PING CHAU

Tung Ping Chau (東平州) is an island in northeast Hong Kong, much closer to China than Hong Kong itself. Tung Ping Chau is an esteemed museum of geomorphology, with unique geological features of steep cliffs towering over wave-cut platforms. The sandstones formations here are from 6.5 million years ago. Formed entirely of colorful sedimentary rocks, the island is a designated country park, marine park, and UNESCO-protected national geopark. In the tour, you'll come across jagged rocks lurching over rock pools warm with marine life on one side, and an area of old hamlets on the other. The island's coastline boasts of nearly 60 different species of coral and is a popular diving site.

Tung Ping Chau's unique landscape and remoteness has made it an interesting attraction, one that you can boast to friends about having been!



Suggested Itinerary:

- 8:45 am meet at Ma Liu Shui Pier
- Arrive Tung Ping Chau at 10:30 am
- Attractions: A Ma Wan, Kang Lau Shek and Rock Pools, Lung Lok Shui, Lan Kwo Shui, Cham Keng Chau, Tai Long Village, Tin Hau Temple
- Depart Tung Ping Chau at 5:15 pm
- Return to Ma Liu Shui by 6:45 pm

***Full Day Trip with snorkeling options.**

TUNG PING CHAU MARINE PARK



YIM TIN TSAI

“Yim Tim” (鹽田) in Cantonese means salt farm. In earlier days, villagers of the island lived on farming and salt-making. Almost all villagers have now migrated to urban areas in Hong Kong but in recent years, efforts were made to turn the island into a tourist spot. There is now a restaurant, a museum, a tourist information centre, and even a golf course on the other side of the island.

A chapel was built by Father Josef Freinademetz on the island in 1879. The St Joseph's Chapel had become a landmark of Yim Tin Tsai Village, still standing erect today. Besides visiting the salt farms, you can also walk to the other side of the island to enjoy the geological nature of the coastline.

UNESCO has awarded the island for its conservation work done on the chapel and revival of the salt pans that were once its livelihood. In the excursion, we'll explore the renovated St Joseph's Chapel, mangrove areas, salt farm and learn about the culture and heritage of the island, and how it has been revitalized as an eco-tour location.

Half day trip or Full day trip with kayaking options.



Highlights:

- the salt farm.
- the former village school, now exhibition centre.
- the St. Joseph's Chapel.
- the statue of St. Joseph Freinademetz and the foundations of the first chapel.
- the water well - water for life.
- the cemetery.
- the viewpoint up the hill.
- the green jade bridge and mangrove areas.



LUNG FU SHAN NIGHT TOUR

Established in 1998, Lung Fu Shan is a popular spot for many members of the public, with morning runners and hikers trekking its trails on a regular basis. While it includes the smallest country park in Hong Kong with just 47 hectares, it boasts a surprising rich diversity of nocturnal species, such as the Malayan porcupine, golden-spotted tiger beetle, tarantulas and even the uncommon Banded krait. The invasive greenhouse frog can also be found along its hills, which is considered a threat towards the endemic Romer's tree frog. Join us as we explore the nocturnal fauna of Hong Kong

Night tour



SAI KUNG MYSTERY NIGHT ADVENTURE

In this tour we'll explore a quiet and hidden area in Sai Kung with our expert guide to discover some unique species. We will be going to a protected area in Sai Kung with a variety of habitats including orchard, farmland, pond and forest. As a result, strolling around the area one will encounter both forest and lowland species which will be a very interesting night adventure.

In particular, several species of frogs come to chorus in the ponds and ditches every night. If we are lucky we might even see one of the smallest amphibians in Hong Kong.

Night tour



TAI PO KAU NIGHT TOUR

Established in 1977, Tai Po Kau (大埔滘) Nature Reserve is a land of 460 hectares, containing some of Hong Kong's most mature secondary forests and many of Hong Kong's fauna. Today, it is one of Hong Kong's most popular and well-known wildlife spots, providing a safe haven for a plethora of wildlife species, such as migratory birds and Hong Kong warty newts during the winter months, and frogs and many different types of arthropods in the summer. Regular sightings include Red Muntjac, a small and only member of the deer family in Hong Kong, along with East Asian Porcupines and Wild Boars, but a certain amount of luck is required to encounter the elusive Leopard Cat.

In this night tour, we will explore the lower levels of this huge nature reserve, where we may see frogs near the ponds and rivers, moths fluttering about, insects resting on the plantation, and maybe bats flying through the night sky. Tai Po Kau is also a well known location to see Fireflies, which breed from March to November, with breeding peaking between May to August. Dwarf Wood Scorpions are also common in Tai Po Kau. With the aid of UV lights we will be able to see these shy nocturnal creatures at their best, as their exoskeleton glows a bright cyan-green under the light.

Join us to we explore the nocturnal fauna of Hong Kong.



Highlights:

- Get up-close to native wildlife
- Popular choice with kids
- See wild snakes and sleeping birds
- See native wildlife in their natural habitat
- Seasonal encounters

Night tour



TAI TAM RESERVOIR NIGHT TOUR

This 2.5-hour guided night walk will surely provide you a chance to discover the nocturnal biodiversity at Tai Tam Country Park, one of the most famous country parks in Hong Kong. Apart from its notable reservoir and historical sites, luxuriant woodlands and streams are also enclosed, nurturing a diversity of nocturnal animals such as amphibians and reptiles. Our experienced and fervent guides would not only help you spot frogs, lizards, snakes, and fireflies, but also other fascinating creatures along the designated trail in Tai Tam Reservoir. On the tour, participants can enjoy their nighttime with the symphony of nature and the beauty of biodiversity in Hong Kong. With a unique nighttime experience in the woods, this safe and relaxing tour would definitely be a perfect choice for families who love venturing the nature.

Night tour

